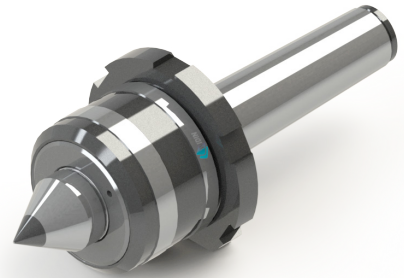
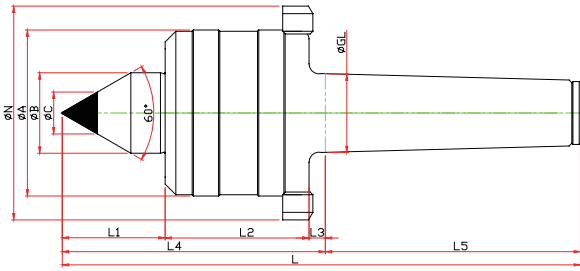


# NKCN-TYPE

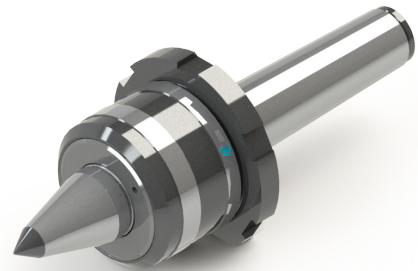
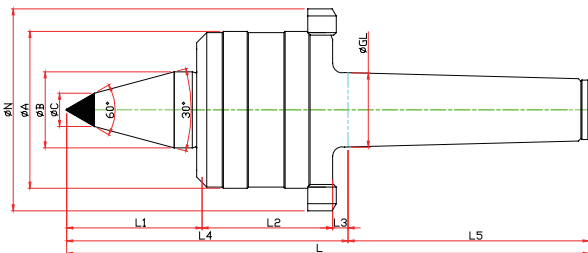
※ 너트, 초경타입 Carbide, Nut Type



Model	Order Number	Morse Taper	Dimension											Weight MAX.	R.P.M MAX.	Run Out
			GL	A	B	L1	L2	L3	L4	L5	C	N	L			
LC-3NKC	020113	NO.3	23,825	52	22	29	42	5	76	80	10	70	156	1900	5000	0,003
LC-4NKC	020114	NO.4	31,267	66	32	37	57	6.5	100.5	101.5	14	85	202	2700	3800	0,003
LC-5NKC	020115	NO.5	44,399	80	40	45.5	57	6.5	109	129.5	18	98	238.5	3200	3400	0,005
LC-6NKC	020116	NO.6	63,348	132	65	65	100	8	173	182	25	165	355	10000	1800	0,005

# NKBCN-TYPE

※ SHAFT 확장(바이트 간섭 최소화) SHAFT EXTENSION(Minimize the bite-interference)  
 ※ 너트, 초경타입 Carbide, Nut Type



Model	Order Number	Morse Taper	Dimension											Weight MAX.	R.P.M MAX.	Run Out
			GL	A	B	L1	L2	L3	L4	L5	C	N	L			
LC-3NKBC	021113	NO.3	23,825	52	22	48	42	5	95	80	10	70	175	980	5000	0,003
LC-4NKBC	021114	NO.4	31,267	66	32	53	57	6.5	116.5	101.5	14	85	218	1400	3800	0,003
LC-5NKBC	021115	NO.5	44,399	80	40	65.5	57	6.5	129	129.5	18	98	258.5	1900	3400	0,005
LC-6NKBC	021116	NO.6	63,348	132	65	78	100	8	186	182	25	165	368	5100	1800	0,005

NC-TYPE

NCP-TYPE

NK · NKD TYPE

GR · SM TYPE

SMP-TYPE

D50 TYPE

HD-TYPE

PT-TYPE

LM CENTER

LM-H CENTER